



CORPORATE PROFILE

IMV CORPORATION

Corporate Highlights



Company

- World largest publicly traded shaker manufacturer in terms of sales amount.
- 59 years of experience.
- Single and Multi-axis shaker, amplifier, controller, and sensor manufacturer.
- Three locations of test laboratories in Japan (Another one is coming) and One in Thailand.
Osaka lab has ISO 17025 (4th one is coming).
- UL certification tests possible.

Market

- Nearly 70% of the Japanese market (Almost 100% of the aerospace).
- Market expansion to Asia, EU, and Russia.
- Customers include most of the major organizations in Japan, such as Toyota (Incl. 100% at Denso), Honda, and Mitsubishi groups including JAXA (Japan Aerospace eXploration Agency).
- JQA (Japan's leading inspection, calibration, verification, testing and certification organization).
- TUV America has IMV's K125 (a 4-inch stroke 28,000 lbf water-cooled shaker).
- Kelly Space & Technology, Inc. (KST) has a 2-inch stroke K125.
- KST also has two sets of IMV 200KVA amplifiers used for NASA's SLS related tests.

Corporate Highlights



Product

- Provides 8,760-hour Continuous Use Warranty (Extended warranty can be provided).
- PS guide provides extreme reliability when it is loaded (Japan & U.S. patented).
- Top level of controller resolution.
- Produces an environmental chamber.
- Energy-saving shaker system called "Eco Shaker."

Network

- Five locations of distributors or sales reps.
- Three locations of maintenance companies.
- Two trained technicians in Michigan.
- Four trained technicians in Southern California.

Company Overview



Company Name	IMV CORPORATION
Establishment	April 17, 1957
Capital	JPY 464.81 million
Employee	223 (Sep. 2014)
Annual Sales	About JPY7.8 billion (Sep. 2014)
Listed Securities Market	JASDAQ
Securities Code	7760
Fiscal Year Ending	September 30



Corporate History



1957 **Founded “International Mechanical Vibration Lab. Limited”**

1988 **Opened Tokyo Test Laboratory.**

2005 **Listed on JASDAQ stock market.**

2011 **In Oct., opened IMV CORPORATION EUROPEAN TECHNICAL CENTRE in UK.**

**** Now, “IMV EUROPE LIMITED”**

2012 **In Jan, opened IMV (THAILAND) CO., LTD.**



IMV EUROPE LIMITED



IMV (THAILAND) CO., LTD.

In Nov., opened IMV CORPORATION German Sales Office in Munich, Germany.

****Now “IMV EUROPE LIMITED German Sales Office”**

2013 **In May, opened IMV CORPORATION Shanghai Representative Office.**

2015 **In January, opened UK Manufacturing Centre.**



IMV EUROPE LIMITED
European Manufacturing Centre



IMV EUROPE LIMITED
German Sales Office



IMV CORPORATION
Shanghai Representative Office

IMV Global Network



Osaka



- Head Office
- Engineering Div.
- Osaka Sales Office
- Osaka Test Laboratory

Tokyo



- Tokyo Sales Office
- Tokyo Engineering Service



- MES Engineering Service
- Tokyo Test Laboratory

Thailand



IMV (THAILAND) CO., LTD.

Nagoya



- Nagoya Sales Office
- Nagoya Test Laboratory

U.K.



IMV EUROPE LIMITED
European Manufacturing Centre



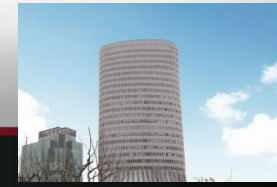
IMV EUROPE LIMITED

Germany



IMV EUROPE LIMITED
German Sales Office

China



IMV CORPORATION
Shanghai Representative Office

IMV CORPORATION

Major Business



Measuring System

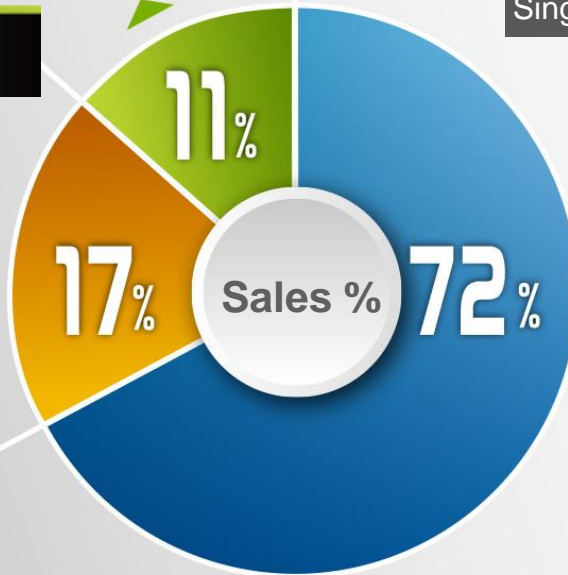
MES
Measuring Systems

Vibration Test System
Single • Multi axis/Environmental chamber combined

TSS
Test & Solution Service



Test & Solution Service



DSS
Dynamic Simulation Systems





Dynamic Simulation Systems (DSS) Vibration Test System

Single • Multi Axis & Environmental Chamber Combined

IMV CORPORATION

Copyright © IMV CORPORATION 2015 All right reserved.

Product Lineup



New Type
Vibration Test System
A series



Multi axis
Vibration Test System



1 Poster - 3 axis
Vibration Test System



Temperature/Humid Chamber
Environmental Vibration Test System



6 Degree of Freedom
Vibration Test System



Low Acoustic and Compact
Vibration Test System

Product Topics



New Type Vibration Test System

A Series



IMV VIBRATION
TEST SYSTEMS
A series

A series provide with high performance enough to respond to the needs for high spec. test requirement



① Improvement of performance

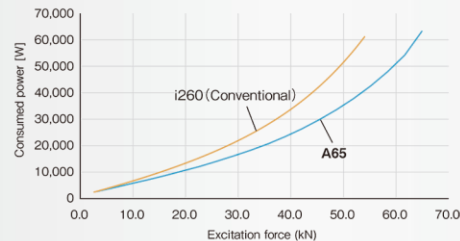
Expansion of test case and respond to high spec. test
Meet the needs for versatile test use.

- Improvement in excitation force
- Standard 76.2mm displacement
- Expansion in frequency range
- Crosstalk reduction
- High velocity shock test

② User friendly and security

Aware of security and functionality and realizes more energy-saving.

Comparison of Consumed power per excitation force A65 vs i260



③ User first principle

Intuitive interface leads the operator with user-friendly guidance.

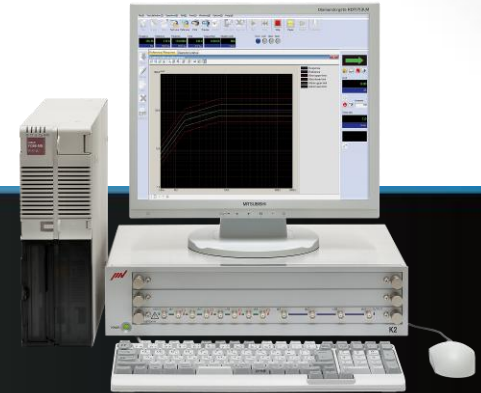




Vibration Controller

K2

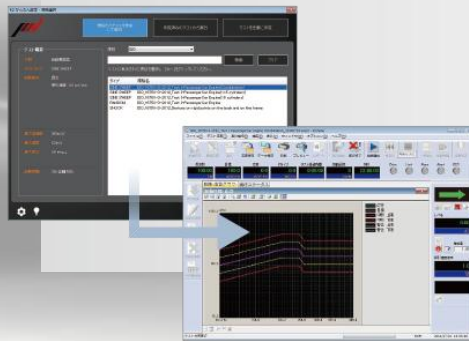
Single controller supports all.



The vibration controller is a unit that faithfully enables and implements the tests that our customers need. IMV has always conducted all the development of all the hardware and software of this important system in-house. IMV strives to make complicated tests easy to do.

Select the test standard and create test condition easily "Launcher"

Only by selecting a test condition from the list of standards, the test file is automatically generated.



"System Monitor" You can confirm test state from anywhere.



Top screen

Top screen (error)

Energy saving control

Real automatic monitoring



Eco screen

Product Topics



Environmental Test Chamber



Industrial products are always exposed to environmental impacts, which are "climate" and "physical" environmental impacts. These are not separately impacting, but in intricately intertwined way as a combined stress. We offers temperature and humidity chamber with vibration test systems and meet the customer's requests immediately.

Standard



Temperature / humidity chambers for multi-axis excitation



Sales and Service Network





Vibration Measurement (MES) Measuring System

IMV CORPORATION

Copyright © IMV CORPORATION 2015 All right reserved.

Product Lineups



Portable Vibrometer

Can measure various vibration from ground vibration to rotating machine.



WiFi Portable Vibrometer

Vibration Monitoring

Constant monitoring of mechanical vibration generated from pump at power station to prevent hazardous accident.



Contact Sensor Type Vibration Monitoring System

Seismic Monitoring

Constant monitoring of seismic vibration. Can operate emergency shutdown to prevent second disaster.



Seismic Monitoring System

Vibration Sensor

Offer various kinds of sensors provided as a vibration professional.



Piezoelectric Accelerometer

Product Topic ①



Portable Vibrometer (Equipment Diagnosis)

CardVibro
Air 2



The first WiFi Portable Vibrometer

Point 1

Safe measurement with wireless WiFi

Point 2

Operation with Android Tablet PC

Point 3

Light·Compact·High speed signal response
Low power consumption



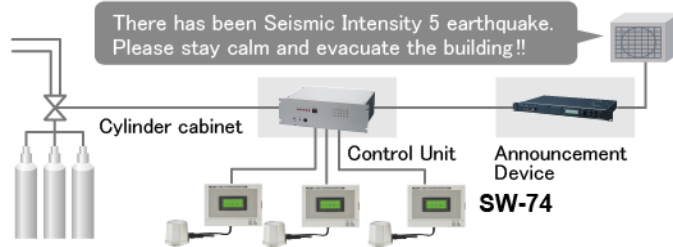
Vibration Monitoring System

Detect earthquake and prevent second hazardous disaster by using alarm contacts



Semiconductor Plant

SW-74



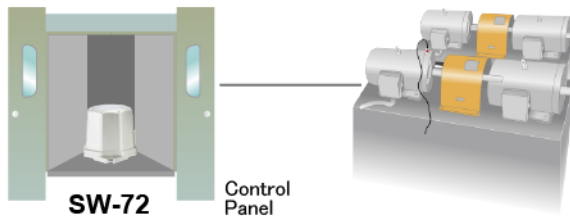
Evacuation Announcement

SW-74SI



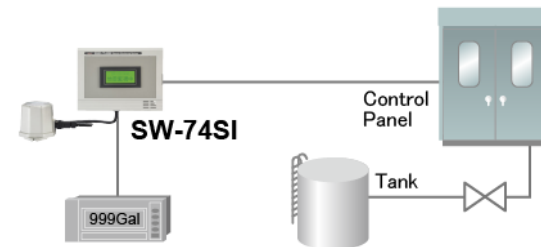
Hazardous material isolation

SW-72



Secure Safety

SW-74SI





Test Laboratory and Solution (TSS)
Test & Solution Service

IMV CORPORATION

Copyright © IMV CORPORATION 2015 All right reserved.

IMV Test Laboratory



Nagoya



Miyoshi, Aichi
Opened in 2007



Large scale 6 DOF

Max. Force 12.5t for
Railway Carriage Equipment
Opened in March, 2009

Osaka



Nishiyodogawa-ku, Osaka
Opened in 2005

Thailand



Newly opened in 2012.
Biggest laboratory in Thailand.



Tokyo



Sagamihara, Kanagawa
Opened in 1988

Tokyo Uenohara site



Uenohara, Yamanashi
Will be opened in Oct. 2015



Case 1 No idea how to decide test condition....

Case 2 Test sample has no problem in actual field, but doesn't pass test standard. Why?

Case 3 We want to simulate defective modes realistically, but test don't go just as expected.



Test Technology of World Premium Level

Feature : World premium level of test facility, test technology, more realistic reproduction of defective mode, multi points etc

Vibration Test : Sine, Random, Combined mode (Sine on Random, Random on Random) Actual data reproduction, response spectrum
Sine beat, Single axis, 3 axial simultaneous, 6DOF, Multi channel, Data recording, Analysis

Shock Test : Classical Shock (Half Sine, Saw tooth waveform, Trapezoid waveform) Shock response spectrum

Environmental Test : Temperature • Humidity • Vibration combined test

Test Planning by Experienced Professionals

Feature : Appropriate advise and consulting by professionals with expertise of test standard (IEC, JIS)

Content : Understanding and selecting of test standard.

Test tailoring (Develop customise test specification from vibration measurement of actual field.)



Major Test System

Tokyo Tokyo Test Lab.

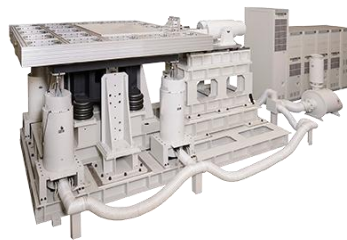
Japan first vibration test laboratory with 25 years history and more than 8000 test cases



June, 2012 World large scale Single axis vibration test system with horizontal table



April 2013 Earthquake resistance test system With hybrid motor actuators.



Nagoya Nagoya Test Lab.

Target for automotive industry Equipped with many thermal chamber combined system



June, 2012 Horizontal Vertical change over chamber combined system

Osaka Osaka Test Lab.

Equipped with single and multi axis system up to large scale vibration test system According to JIS E4031.



Large scale vibration test system for railway carriage equipment

Table size 4.0m x 3.5m With 10 shakers to reproduce 6 degree of freedom

Thailand IMV (THAILAND)

Largest laboratory in Thailand



Started business from Jan. 2012 Chamber combined horizontal/vertical system